

Space-E/CAM 5 Axis

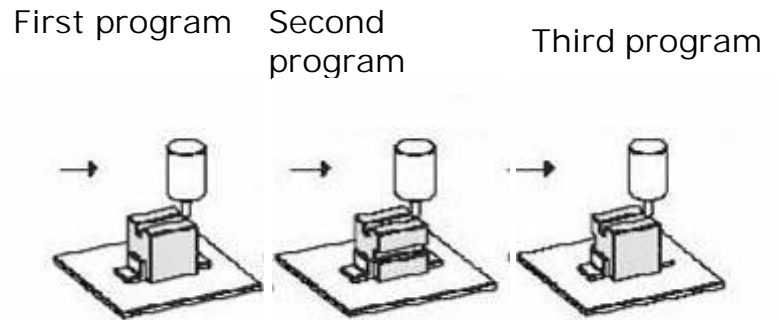
:: Space-E CAM 5 Axis Feature ::

Advantage for CAM 5 Axis

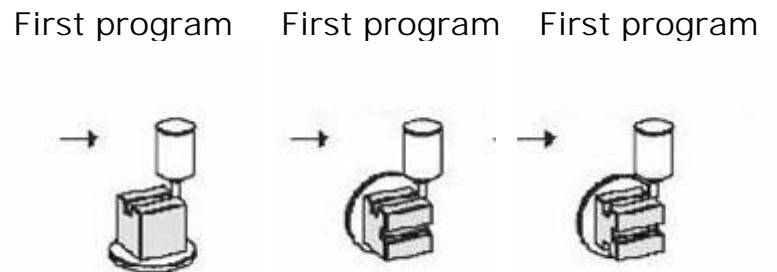
- Processing time and accuracy improvement by touring condition easying .
- Shortening of arrangements time when inclination is processed .
- Man-hour reduction by reduction in electric discharge machining part .
- Improvement of processing side fineness that makes the best use of tool characteristic 5 axes inclined to it .

Sample : Cutting in various side of work piece

CAM 3 AXIS



CAM 5 AXIS



:: Space-E/CAM 5 Axis Setup ::

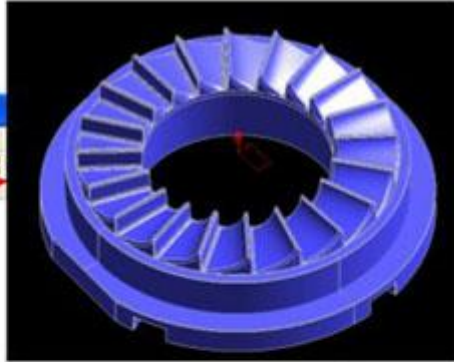
Create 3Axis toolpath

Simulation & verification

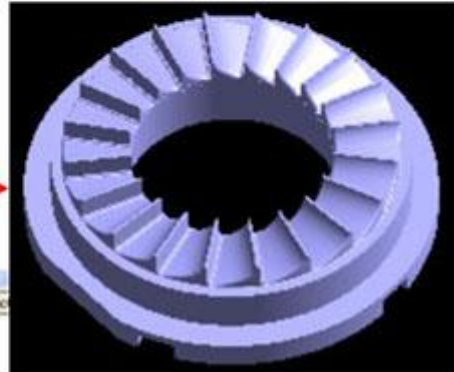
Create 5Axis toolpath & G code

X-21.267	Y9.129	Z0.614	C-23.23	
X-21.721	Y8.162	Z0.617	C-20.594	B-8.82
X-19.568	Y7.159	Z0.489	C-20.097	B-7.93
X-17.844	Y6.360	Z0.403	C-19.618	B-7.21
X-14.820	Y4.976	Z0.273	C-18.560	B-5.96
X-11.354	Y3.416	Z0.152	C-16.746	B-4.52
X-8.746	Y2.263	Z0.086	C-14.507	B-3.449
X-7.877	Y1.879	Z0.071	C-13.414	B-3.092
X-16.250	Y-3.351			
X-18.673	Y-3.618			

:: Set up Data ::

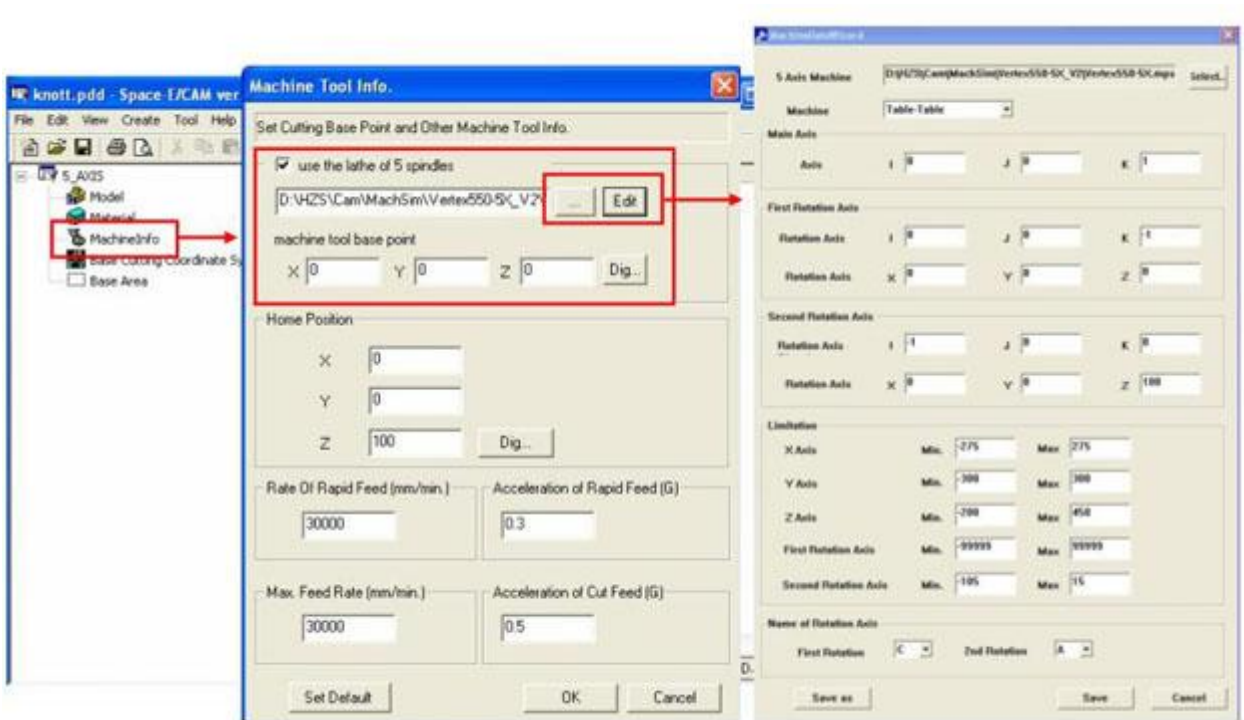


Define Model



Define material

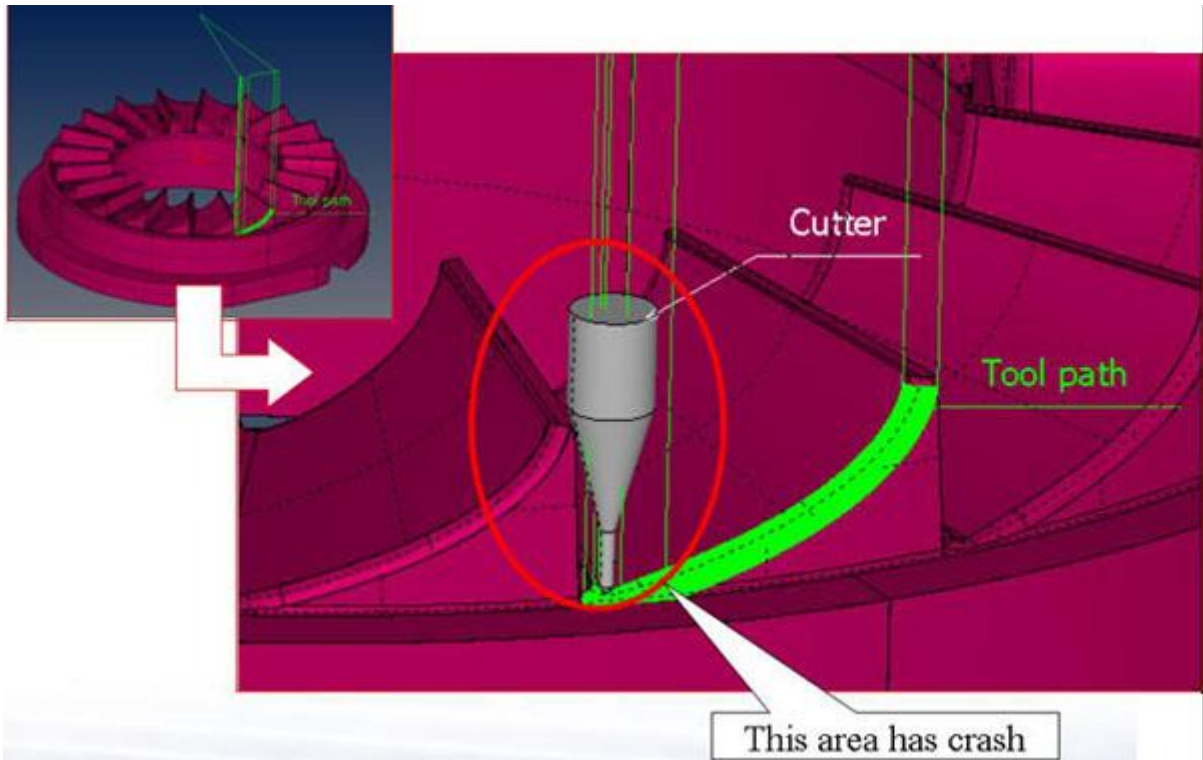
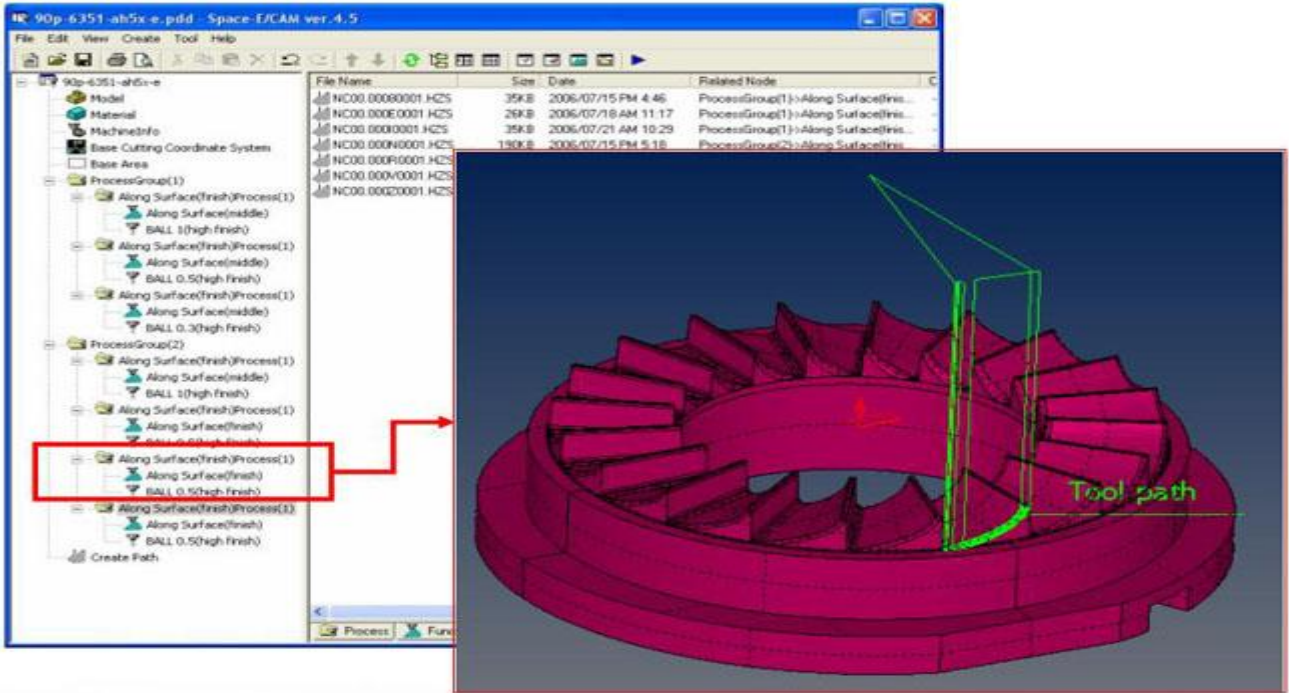
Define model and material



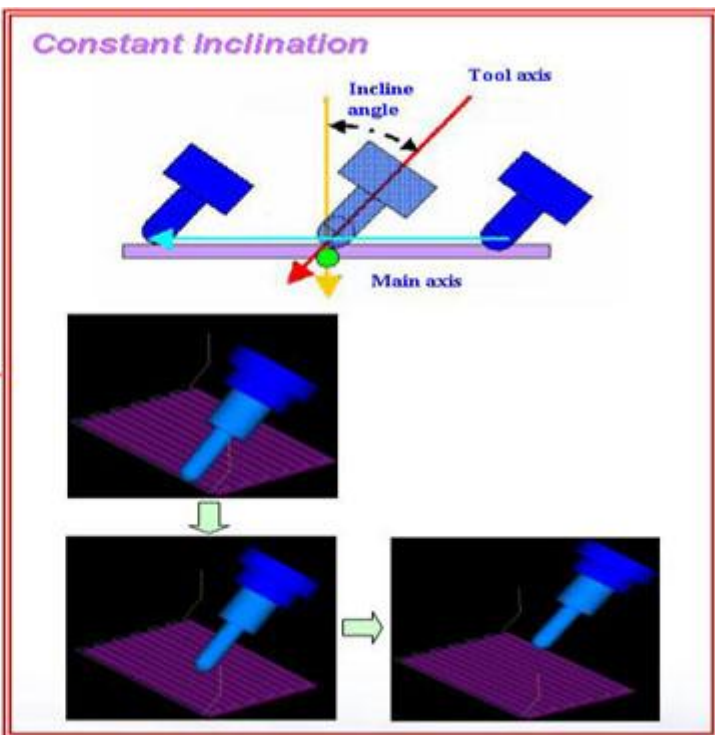
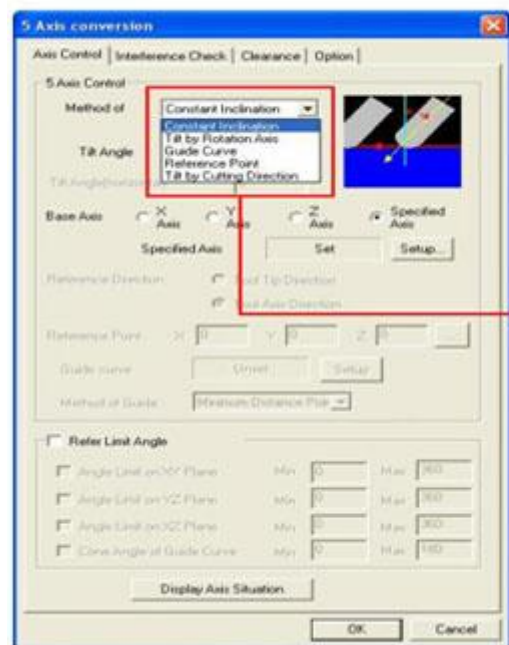
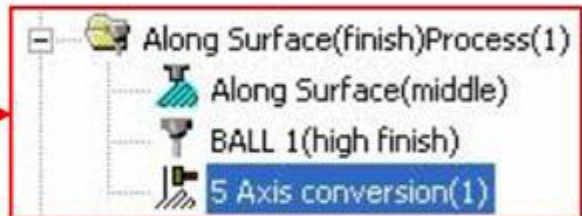
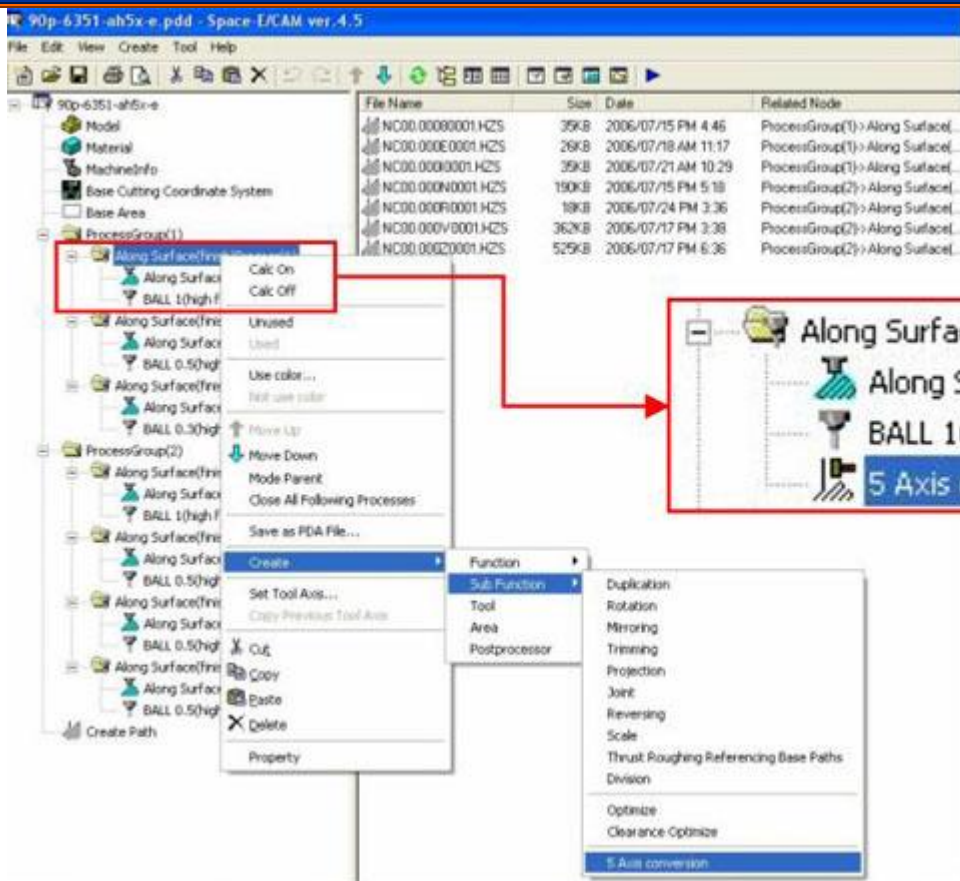
Define machine

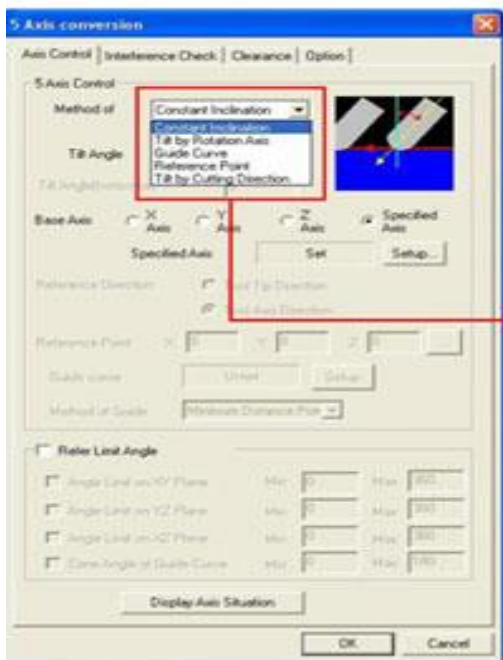
:: Make Process ::

Make tool Path axis

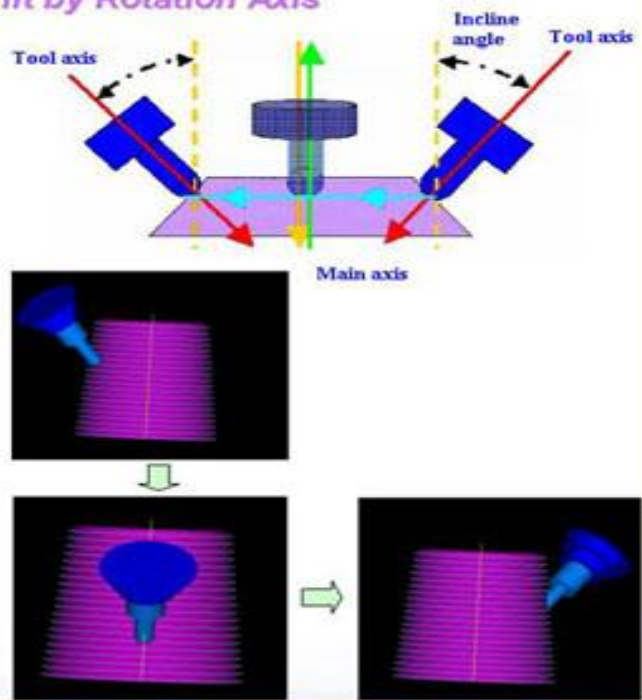


5 Axis Set up

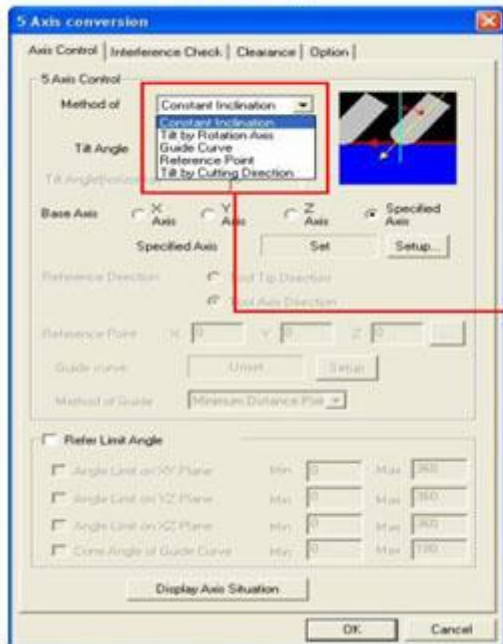




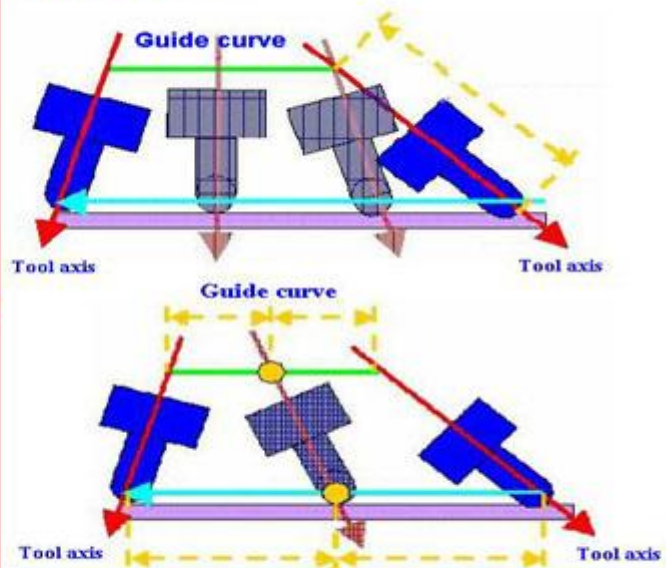
Tilt by Rotation Axis



5 Axis setup

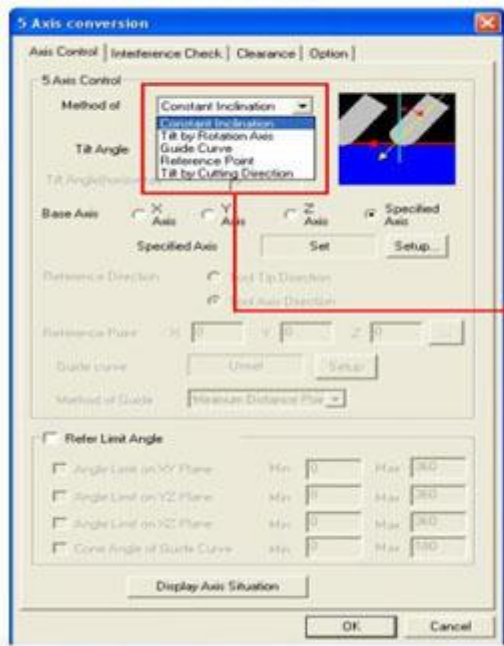


Guide Curve

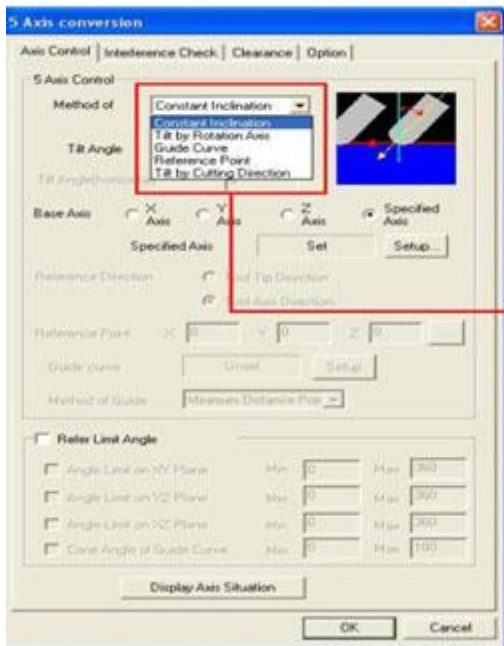
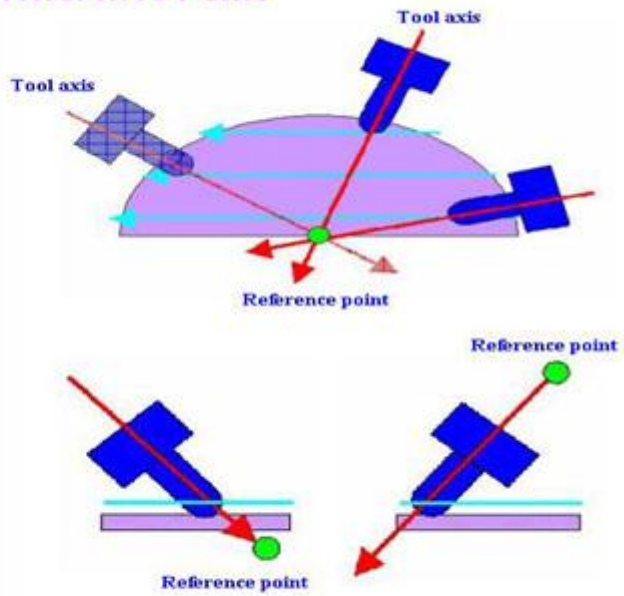


It decides it in 'Refer to the guide curve based on the guide curve that sets inclination information at each position in the route.

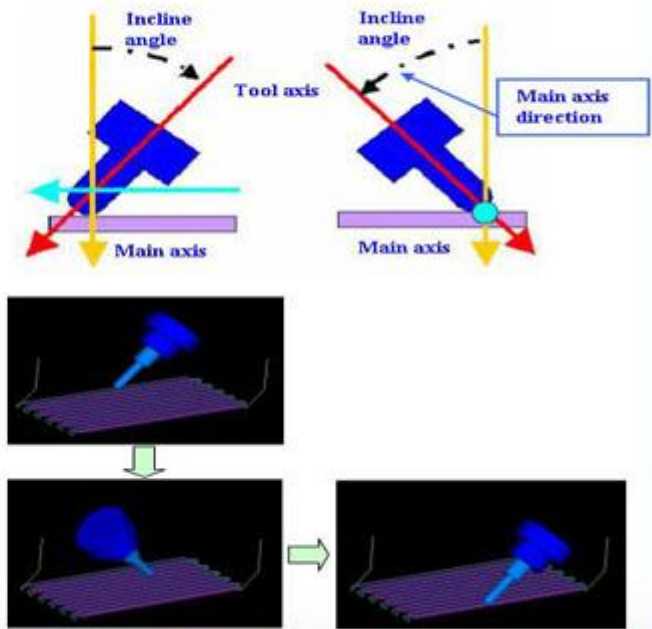
5 Axis setup

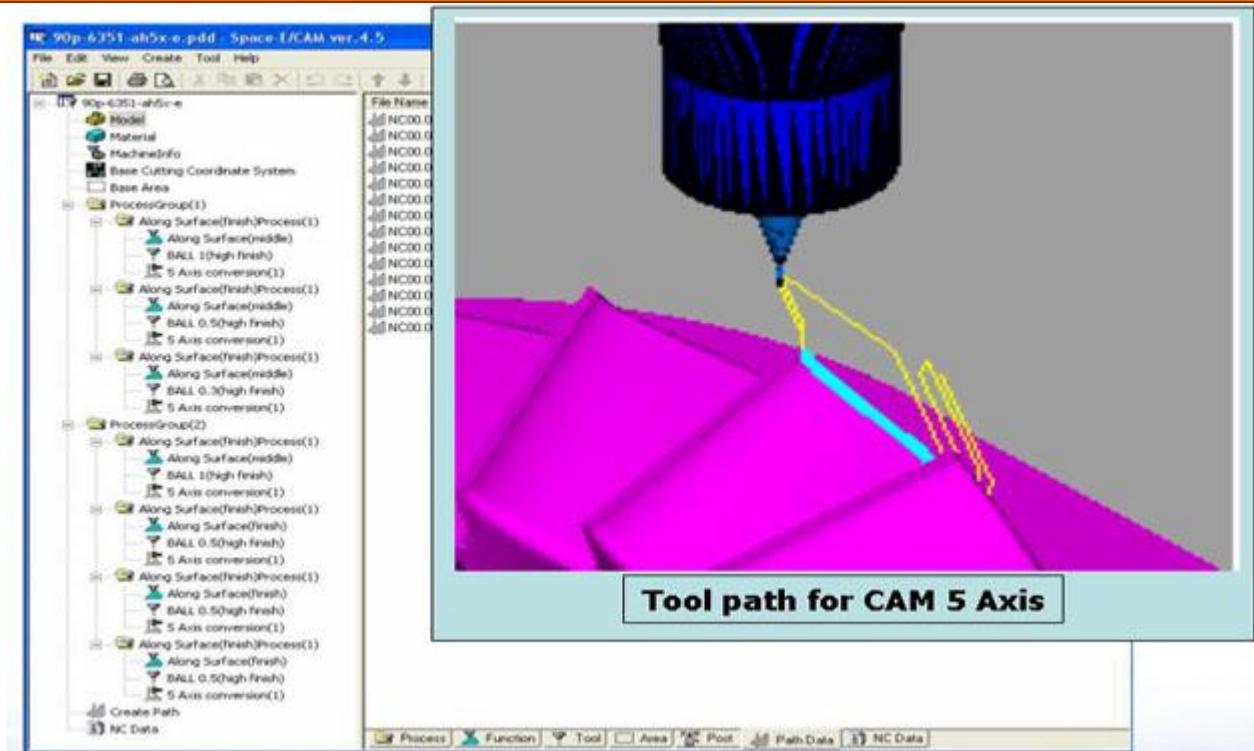


Reference Point



Tilt by Cutting Direction





NC data for CAM 5 Axis

```

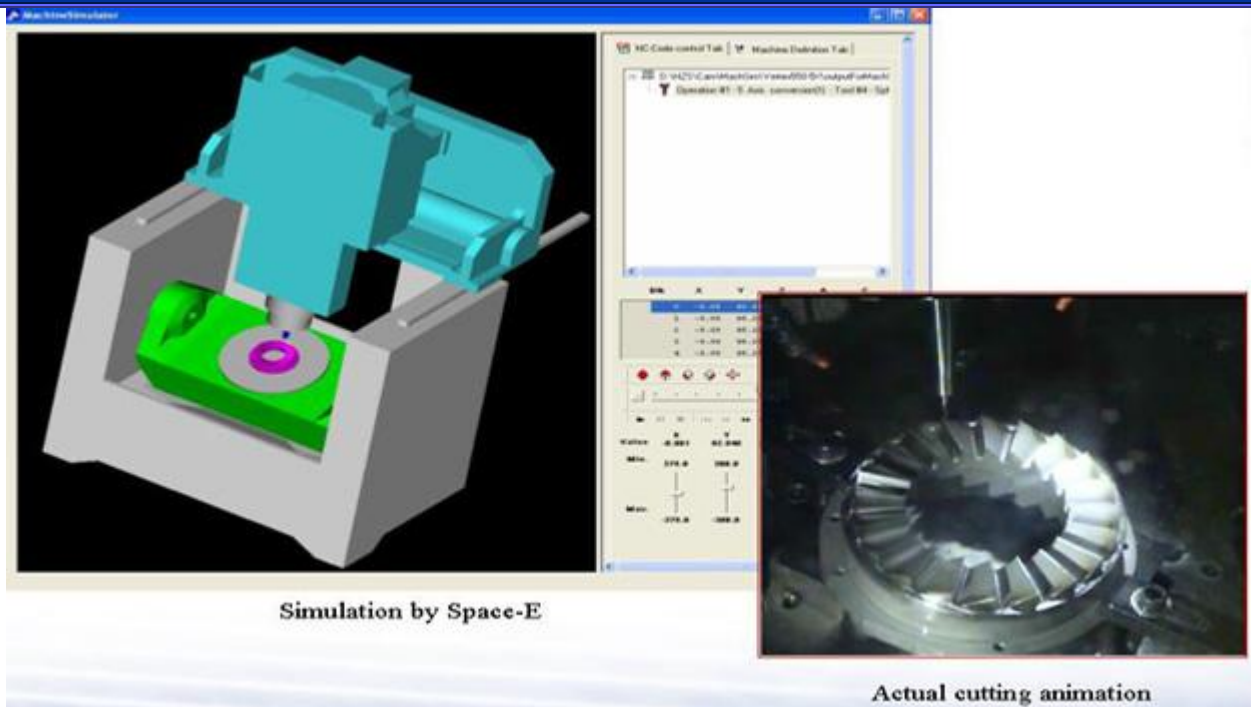
...
N275 G01 X-98.553 Y-40.053 Z66.474 C-65.471 B38.686
N280 G01 X-98.660 Y-40.183 Z66.475 C-62.123 B38.304
N285 G01 X-98.768 Y-40.312 Z66.476 C-58.691 B38.017
N290 G01 X-98.875 Y-40.442 Z66.477 C-55.198 B37.830
N295 G01 X-98.982 Y-40.572 Z66.478 C-51.669 B37.747
N300 G01 X-99.090 Y-40.701 Z66.479 C-48.131 B37.769
N305 G01 X-99.197 Y-40.831 Z66.480 C-44.609 B37.897
N310 G01 X-99.304 Y-40.960 Z66.481 C-41.130 B38.127
N315 G01 X-99.412 Y-41.090 Z66.482 C-37.718 B38.457
N320 G01 X-99.519 Y-41.220 Z66.484 C-34.395 B38.879
N325 G01 X-99.626 Y-41.349 Z66.485 C-31.179 B39.386
N330 G01 X-99.734 Y-41.479 Z66.486 C-28.084 B39.970
N335 G01 X-99.841 Y-41.608 Z66.487 C-25.119 B40.623
N340 G01 X-99.948 Y-41.738 Z66.488 C-22.293 B41.334
N345 G01 X-100.056 Y-41.868 Z66.489 C-19.607 B42.095
N350 G01 X-100.163 Y-41.997 Z66.490 C-17.064 B42.896
N355 G01 X-100.270 Y-42.127 Z66.491 C-14.660 B43.730
N360 G01 X-100.377 Y-42.256 Z66.492 C-12.394 B44.587
N365 G01 X-100.485 Y-42.386 Z66.493 C-10.258 B45.462
...

```

Addition tool axis and table axis

:: Simulation ::

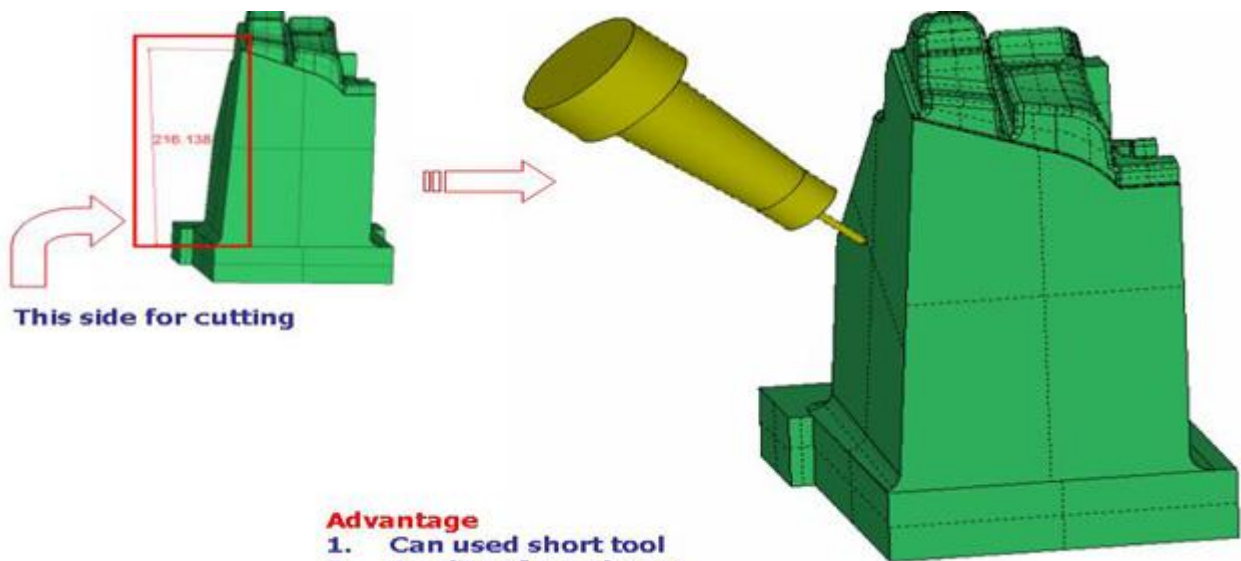
Machine Simulation for CAM 5 Axis



Simulation by Space-E

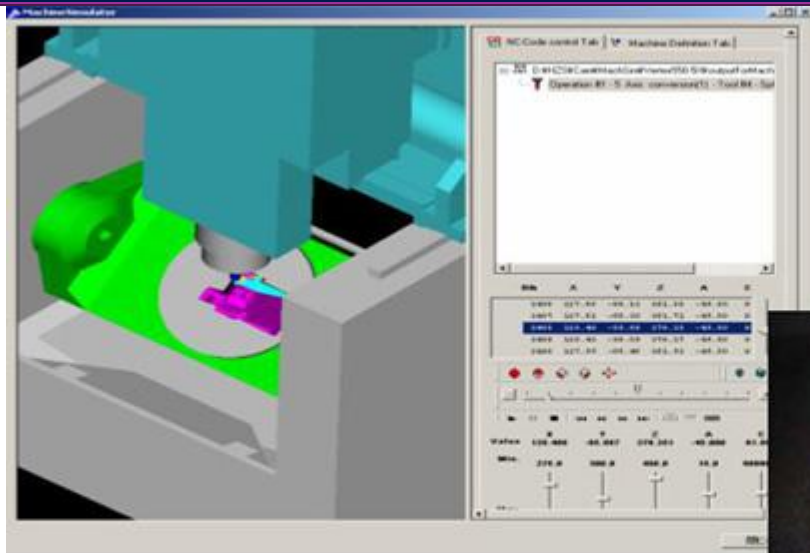
Actual cutting animation

:: Space-E/CAM 5 Axis Sample ::



This side for cutting

- Advantage**
1. Can used short tool
 2. Quality of roughness
 3. Reduce cost



Simulation by Space-E



Actual cutting animation